

Kusch+Co in use

references care

shaping the way we sit

Ancient civilisations had already discovered the curative properties of rooms. That is why modern-day hospitals, residential care and nursing homes, medical practices, and social institutions all want to provide a healing environment. Next to the high functional demands, these facilities have to give special attention to the overall room atmosphere with the aim of making patients, visitors, doctors and nursing staff feel at ease, secure and comfortable. With our long-time experience in furnishing healthcare facilities all over the world, we are perfectly capable of handling this assignment. Our portfolio comprises highly comfortable, design-oriented wooden- or metal-frame series with a variety of relaxing and nursing chairs, or our broad spectrum of seating and tables from our kuschmed® Hygienic-Line for more hygienic safety. On top of this, we have special seating on offer suited for patients with Reduced Mobility as well as Bariatric Seating.

Seit der Antike weiß man um die wohltuende Wirkung von Räumen. Heute sind Krankenhäuser, Senioren- und Pflegeheime, Arztpraxen und Sozialeinrichtungen die heilenden Orte unserer Zeit. Hier werden hohe funktionale Anforderungen an die Einrichtung gestellt, gleichzeitig ist eine Raumatmosphäre gefragt, in der sich Patienten, Angehörige, Ärzte und Pflegende geborgen, sicher und wohlfühlen. Eine Aufgabenstellung, die wir in jeder Konsequenz erfüllen, denn im Marktsegment Health sind wir international zu Hause. Sei es mit wohnlichen Möbeln aus Holz oder designorientierten aus Metall, mit Ruhe- und Pflegesesseln oder mit der breiten Palette von Sitzmöbeln und Tischen unserer kuschmed® Hygienic-Line für mehr Hygiene-Sicherheit. Außerdem mit speziellen Möbeln für die Bereiche Reduced Mobility und Bariatric Seating.

References worldwide

Austria

- Residential care and nursing home Simmering, Vienna
- Tirol Kliniken GmbH, Regional Hospital Hall

Belgium

- AZ Damiaan, Ostend
- AZ Groeninge, Kortrijk
- dilhome, Dilbeek
- General Hospital Damiaan, Ostend
- General Hospital Groeninge, Kortrijk
- General Hospital Maria Middellares, Ghent
- General Hospital Nikolaas, Campus Beveren
- General Hospital Nikolaas, Campus Beveren
- General Hospital Sint-Lucas, Ghent
- General Hospital Sint-Maarten, Mechelen
- General Hospital St. Augustinus, Veurne
- General Hospital St. Elisabeth, Herentals
- General Hospital Zeno, Campus Knokke-Heist
- Hospital Sint-Jan, Bruges
- Hospital St. Jozef, Pittem
- Jan Yperman Hospital, Ypres
- Psychiatric Hospital Alexianen, Tienen
- Psychiatric Hospitals St. Francisc, Velzeke
- Public Centre for Social Welfare Arendonk
- Public Centre for Social Welfare Genk
- Public Centre for Social Welfare Hamme
- Public Centre for Social Welfare Langemark
- Public Centre for Social Welfare Lede
- Public Centre for Social Welfare Pittem
- Public Centre for Social Welfare Wommelgem
- Residential care and nursing home Avondzegen, Eeklo
- Residential care and nursing home De Gerda, Sint-Niklaas
- Residential care and nursing home De Ril, Middelkerke
- Residential care and nursing home De Vlinder, Harelbeke
- Residential care and nursing home De Waterdam, Roeselare
- Residential care and nursing home De Zathe, Nieuwpoort
- Residential care and nursing home De Zilvermolen, Zwijnaarde
- Residential care and nursing home Huize Sint-Jozef, Ypres
- Residential care and nursing home Huize Vincent, Temse-Tielrode
- Residential care and nursing home Immaculata, Edegem
- Residential care and nursing home Oase, Campus Aarschot and Tienen
- Residential care and nursing home Paradijs, Lier
- Residential care and nursing home Rustenhove, Ledegem
- Residential care and nursing home Sint-Anna, Herentals
- Residential care and nursing home Sint-Elisabeth, Ostend
- Residential care and nursing home St. Jozef, Sint-Pauwels

- Residential care and nursing home Ter Durme, Lokeren
- St. Elisabeth Hospital, Herentals
- St. Jozef Hospital, Campus Bornem

Brazil

- Hospital Beneficência Portuguesa, São Paulo

Denmark

- Køge Sygehus
- Nursing home Gyldenrisparken, Copenhagen
- Rigshospitalet, Glostrup
- Sundhedshus Nørrebro, Copenhagen
- Verdishave nursing home, Copenhagen

France

- Hospital Bruyères
- Residential care and nursing home Résidence au Maire, Paris

Germany

- Agaplesion Diaconical Hospital Hamburg
- Agnes-Heim Altenpflegeheim gGmbH, Rees
- AHG Clinic Lake Schwerin, Lübstorf
- Alexian Brothers Hospitals, Bassum
- Alexianer St. Hedwig Kliniken Berlin GmbH
- Altenheim "Am Wasserturm" gGmbH, Limbach-Oberfrohna
- Ameos Clinical Centre Cuxhaven
- Arbeiter-Samariter-Bund Ortsverband Löbau e. V. (Workers' Samaritan Foundation)
- ARONA Hospital for Geriatric Medicine Berlin-Marzahn
- Asklepios Hospital Bad Abbach
- Association for persons with a severe disability e. V., Coppenbrügge
- Augustinum Senior Citizens' Home Bonn
- AWO – Residential care and nursing home Alex Müller, Kaiserslautern
- AWO – Residential care and nursing home Hagenbeckstraße gGmbH, Hamburg
- AWO SANO gGmbH, Ostseebad Berik
- Barmherzige Brüder Rilchingen gGmbH (Brothers of Mercy), Kleinblittersdorf-Rilchingen
- Berufsgenossenschaftliches Universitätsklinikum Bergmannsheil gGmbH, Bochum
- Bodden-Kliniken Ribnitz-Damgarten GmbH
- Borromäus Hospital Leer gGmbH
- Bürgerhospital und Clementine Kinderhospital gGmbH, Frankfurt am Main
- Caritas Charity Organisation, St. Elisabeth, Vechta
- Caritas Hospice Johannes Nepomuk House, Cologne
- Caritas, Bad Kissingen
- Caritasverband Brilon e. V., residential care and nursing home St. Engelbert
- Catholic Clinical Centre Mainz
- Centre for renal, hypertensive and metabolic diseases, Hanover
- Charité – Berlin University of Medicine
- Christophorus-Werk Lingen e. V.
- Christophorus-Werk Lingen e. V., Residential Home Schapen
- Clinic Bremen-Nord
- Clinic for MIC (Minimally Invasive Surgery), Berlin
- Clinic for Psychosomatic Medicine and Psychotherapy, Westerstede
- Clinic Main-Spessart, Lohr
- Clinic Sonnenblick, Marburg
- Clinical Centre Bad Hersfeld
- Clinical Centre Bremen-Nord
- Clinical Centre Esslingen
- Clinical Centre Fulda
- Clinical Centre Großhadern, Munich
- Clinical Centre Ibbenbüren
- Clinical Centre Kassel
- Clinical Centre Ludwigsburg
- Clinical Centre Mother House of the Sister of Mercy of St. Borromeo, Trier
- Clinical Centre Nuremberg Süd
- Clinical Centre Nureme Detmold
- Clinical Centre Stuttgart, Hospital Bad Cannstatt
- Competence Centre Dementia, Schönebeck
- Curanum Bad Schwartau
- Danuvius Klinik GmbH, Petershausen
- Day hospital Oldenburg
- Diana Hospital, Bad Bevensen
- District Hospital Augsburg
- District Hospital Kaufbeuren
- District Hospital Mainkofen
- District Hospital Mainkofen/Passau
- District Hospital Obermain, Ebersfeld
- Donauisär Klinikum Deggendorf-Dingolfing-Landau gKU, Deggendorf
- DPUW Deutsche Pflege und Wohnen AG, Senior Citizen's Home Bessemerstraße, Berlin
- DPUW Deutsche Pflege und Wohnen AG, Senior Citizen's Home Burg
- DPUW Deutsche Pflege und Wohnen AG, Senior Citizen's Home Dresden-Leuben
- DPUW Deutsche Pflege und Wohnen AG, Senior Citizen's Home Ilsede

- DPUW Deutsche Pflege und Wohnen AG, Senior Citizen's Home Leipzig-Probsteida
- DPUW Deutsche Pflege und Wohnen AG, Senior Citizen's Home Peine
- DRK Hospital Clementinenhaus, Hanover
- DRK Hospital Kaufungen
- DRK Hospital Neuwied
- DRK Hospital Saarlouis
- DRK Hospitals Berlin
- DRK Hospitals Berlin/Westend
- Euregio-Klinik Graftschaft Bentheim Holding GmbH, Nordhorn
- Evangelical Hospital Hattingen
- Evangelical Hospital Zweibrücken
- Evangelisches Johannesstift (Evangelical John Foundation), Berlin
- Franciscan Brothers of the Holy Cross, Residence St. Michael, Kirchberg
- German Heart Centre Berlin
- Gesundheit Nord gGmbH, Hospital Group Bremen
- Gesundheit Nordhessen Holding AG, Hospital Kassel
- Gynaecological Hospital Munich West (Krüsmannklinik)
- Gynaecological Hospital University Clinical Centre Freiburg
- Hans Prinzhorn Hospital, Iserlohn
- Hardtwaldhospital II, Bad Zwesten
- Heinrich Braun Clinical Centre, Zwickau
- Helios Geriatric Centre, Zwenkau
- Helios Hospital Gotha
- Helios Hospital, Berlin-Buch
- Helios Hospital, Gifhorn
- Helios Hospital, Warburg
- Helios Hospitals Wuppertal
- Helios Park Hospital, Leipzig
- Helios St. Johannes Hospital, Duisburg
- Hesse Clinic Municipal Hospital Korbach
- Hospital Augsburg
- Hospital Bamberg
- Hospital Bremen-Nord
- Hospital for Pulmonary Medicine Immenhausen
- Hospital Kurhessen, Bad Sooden-Allendorf
- Hospital Magdeburg gGmbH
- Hospital Main-Spessart Lohr, Lohr am Main
- Hospital Oberberg, District Hospital Gummersbach
- Hospital Warendorf, Celle
- Hospital Wörth/Donau, Clinical Centre
- Institute of Public Health Care at Maria Hospital, Wesel
- Katholisches Kinderkrankenhaus Wilhelmstift gGmbH, Hamburg
- Ketteler Krankenhaus gGmbH, Offenbach

- Kliniken im Naturpark Altmühltal GmbH, Eichstätt
- Kliniken Maria Hilf GmbH, Mönchengladbach
- Klinikum Chemnitz gGmbH
- Klinikum Darmstadt GmbH
- Klinikum Ingolstadt GmbH
- Klinikum Magdeburg gemeinnützige GmbH
- Klinikum Oberberg GmbH, Gummersbach
- Klinikum Wahrendorff GmbH, Sehnde
- Klinikum Werra-Meißner GmbH, Eschwege
- Krankenhaus Wittmund gGmbH
- Kreisklinik Ebersberg gGmbH
- Kreiskliniken Esslingen gGmbH, Kirchheim unter Teck
- Kreiskrankenhaus des Vogelsbergkreises in Alsfeld GmbH
- Lahntalklinik, Bad Ems
- Lebenshilfe im Nürnberger Land (Association of People with Disabilities), Altdorf
- Lebenshilfe Soltau e. V.
- LMU Clinical Centre of the University of Munich
- Lower Saxon State Hospital, Moringen
- LVR Clinical Centre Bonn
- LVR Hospital Bonn
- LWL Clinical Centre Gütersloh
- LWL-Hospital Münster
- LWL-Hospital Paderborn and Dortmund
- LWL-Forensic Psychiatric Hospital Manor Haldem, Sternwede
- LWL-Hospital Dortmund
- LWL-Hospital Hemer, Hans-Prinzhorn-Hospital
- LWL-Hospital Paderborn
- Main-Kinzig-Kliniken GmbH, Schlüchtern
- Main-Kinzig-Kliniken GmbH, Gelnhausen
- Malteser Hilfsdienst gGmbH, Munich
- Marien-Hospital, Oelde
- medbo, Regensburg
- Medical Center of the University of Munich, Campus Großhadern
- Municipal Hospital Brandenburg, Brandenburg an der Havel
- Municipal Hospital Dresden-Neustadt, Dresden
- Municipal Hospital Munich
- Neckar-Odenwald-Kliniken gGmbH, Mosbach
- Neurologische Klinik Sorpesee GmbH & Co. KG, Sundern
- Nordwest Hospital Sanderbusch, Sande
- Nursing home Cordian Hausgemeinschaften, Dortmund-Bövinghausen
- Nursing home Cordian Hausgemeinschaften, Duisburg-Laar
- Orthopädische Klinik Hessisch Lichtenau gGmbH
- Ostalb Hospital, Aalen
- Park Hospital Leipzig
- Pius Hospital Ochtrup

- Pius Hospital Oldenburg
- Protestant Foundation Volmarstein, Wetter
- Regional Association for the Inner Mission in Schleswig-Holstein, Rickling
- Regional Hospital Ansbach
- Rehabilitation Centre Oldenburg
- Residential care and nursing home Ahornhof, Bernau
- Residential care and nursing home Bethanien, Chemnitz
- Residential care and nursing home Marienheim, Bad Münstereifel
- Residential care and nursing home Regenta, Bad Schussenried
- Residential care and nursing home St. Anna, Cologne-Lindenthal
- Residential care and nursing home St. Elisabeth, Heilbronn
- Residential care and nursing home St. Joseph, Meckenheim
- Residential care and nursing home Waldblick, Spechbach
- Rheinische Kliniken, Bonn
- Rheumatology Hospital, Bad Nenndorf
- Rheumazentrum Mittelhessen GmbH & Co. KG (Center for Rheumatic Diseases), Bad Endbach
- Rhön-Klinikum AG, Bad Neustadt an der Saale
- Robert Bosch Hospital, Stuttgart
- Rosa Körner Foundation, Weissach
- Rudolf Virchow Klinikum Glauchau gGmbH
- Sana Clinical Centre Hof
- Sana Clinical Centre Lichtenberg, Berlin
- Sana Kliniken Berlin-Brandenburg GmbH, Sana Kliniken Sommerfeld
- Sana Senior Citizen's Home Zur Höhe, Hamelin
- Sankt Johannes Seniorenzentrum Warburg GmbH, Franz Jordan Home
- Saxon Hospital Arnsdorf
- Schön Kliniken Group, Germany-wide 18 hospitals, e.g. in Bad Aiblingen, Hamburg, Königsee, Munich and Schönau
- Seniorenzentrum Sankt Johannes Warburg GmbH
- SLK-Kliniken Heilbronn GmbH
- Social Foundation Bamberg
- Sophien- und Hufeland-Klinikum gGmbH Weimar
- Specialist Hospital Bad Bentheim
- SRH Wald-Klinikum Gera
- SRH Zentralklinikum Suhl GmbH (Central Hospital)
- St. Antonius Hospital, Cologne
- St. Antonius-Hospital Gronau
- St. Augustinus-Kliniken gGmbH, Neuss
- St. Bonifatius Hospital Lingen
- St. Bonifatius Hospital Society, Nursing home Mother Teresa
- St. Elisabeth Hospital, Gütersloh
- St. Elisabeth-Hospital Herten gGmbH
- St. Hedwig Hospital, Berlin

- St. Josef Krankenhaus Essen-Werden GmbH
- St. Joseph's Hospital Berlin-Tempelhof
- St. Maria's Hospital, Brandenburg an der Havel
- St. Marien-Hospital Lüdinghausen GmbH
- St. Mary's Hospital Kassel
- St. Mary's Hospital Osnabrück
- St. Mary's Hospital Schwerte
- St. Mary's Hospital, Amberg
- St. Mary's Hospital, Brandenburg an der Havel
- St. Mary's Hospital, Dresden
- St. Mary's Hospital, Schwerte
- St. Rochus Hospital Telgte GmbH
- St. Vincent Hospital Hanau
- St. Vincent's Hospital, Paderborn
- Städt. Krankenhaus Maria-Hilf Brilon gGmbH
- Städtische Altenpflegeheime Leipzig gGmbH (Municipal Residential Care Facilities Leipzig)
- Stadtkrankenhaus Delmenhorst GmbH
- Staufer Hospital Schwäbisch Gmünd, Mutlangen
- University Clinical Centre Aachen AöR
- University Clinical Centre Bonn
- University Clinical Centre Freiburg
- University Clinical Centre Gießen and Marburg, Marburg
- University Clinical Centre Leipzig
- University Clinical Centre Mannheim
- University Clinical Centre Münster
- University Clinical Centre Tübingen
- University Clinical Centre Ulm
- University Clinical Centre Würzburg
- University Gynaecological Hospital Bonn
- University Hospital Carl Gustav Carus Dresden
- University Hospital Cologne
- University Hospital Münster
- University Hospital Tübingen
- Vinzenz von Paul Kliniken gGmbH, Stuttgart
- Vivantes Clinical Centre Spandau, Berlin
- VKKD Augusta Hospital, Düsseldorf
- VKKD St. Vincent Hospital, Düsseldorf
- Werner Wickert Hospitals, Bad Wildungen
- Wichernstift Altenpflege gGmbH, Ganderkesee
- Wicker Clinic, Bad Wildungen

Ireland

- Mater Misericordiae Hospital, Dublin

Israel

- Caritas Baby Hospital, Bethlehem
- Holy Family Hospital, Bethlehem

Italy

- Nursing home of the municipality Laas
- Nursing home Lajen

Netherlands

- Erasmus University Medical Center, Rotterdam
- Foundation Isala Hospitals, Zwolle
- Health Care Facility ZorgSaam Zeeuws-Vlaanderen, Terneuzen
- Hospital Gelderse Vallei, Ede
- Interzorg Anholt, Assen
- Isala Hospitals, Zwolle
- Martini Hospital, Groningen
- Maxima Clinical Centre, Veldhoven
- Nursing Home La Valence, Maastricht
- Nursing Home Samen Woonzorggroep, Schagen
- Reinier de Graaf Hospital, Delft
- Residential care and nursing home AriënsZorgpalet, Enschede
- Residential care and nursing home Norschoten, Barneveld
- St. Martin Hospital, Nijmegen
- Van Weel Bethesda Hospital, Dirksland

Russia

- Federal Research and Clinical Center of Pediatric Hematology, Oncology, and Immunology, Moscow

Saudi Arabia

- Mouwasat Hospital, Al Jubail
- Mouwasat Hospital, Dammam
- Mouwasat Hospital, Riyadh

Spain

- Clinic Dental Center, Ronda

Switzerland

- Berit Paracelsus Klinik AG, Speicher
- Caregiver Centre Spital Zofingen AG
- Fondation du Home du Glarier, Sion
- Hospital St. Georg, Goldach
- Rehaklinik Zihschlacht AG

United Kingdom

- Schoen Clinic London

USA

- Coler Goldwater Specialty Hospital & Nursing Facility, New York
- Harlem Hospital Center, New York
- Lincoln Medical and Mental Health Center, New York

Residential care and nursing home Huize Sint-Jozef

Ypres, Belgium





Residential care and nursing home Huize Sint-Jozef

Ypres, Belgium





Residential care and nursing home Huize Sint-Jozef Ypres, Belgium





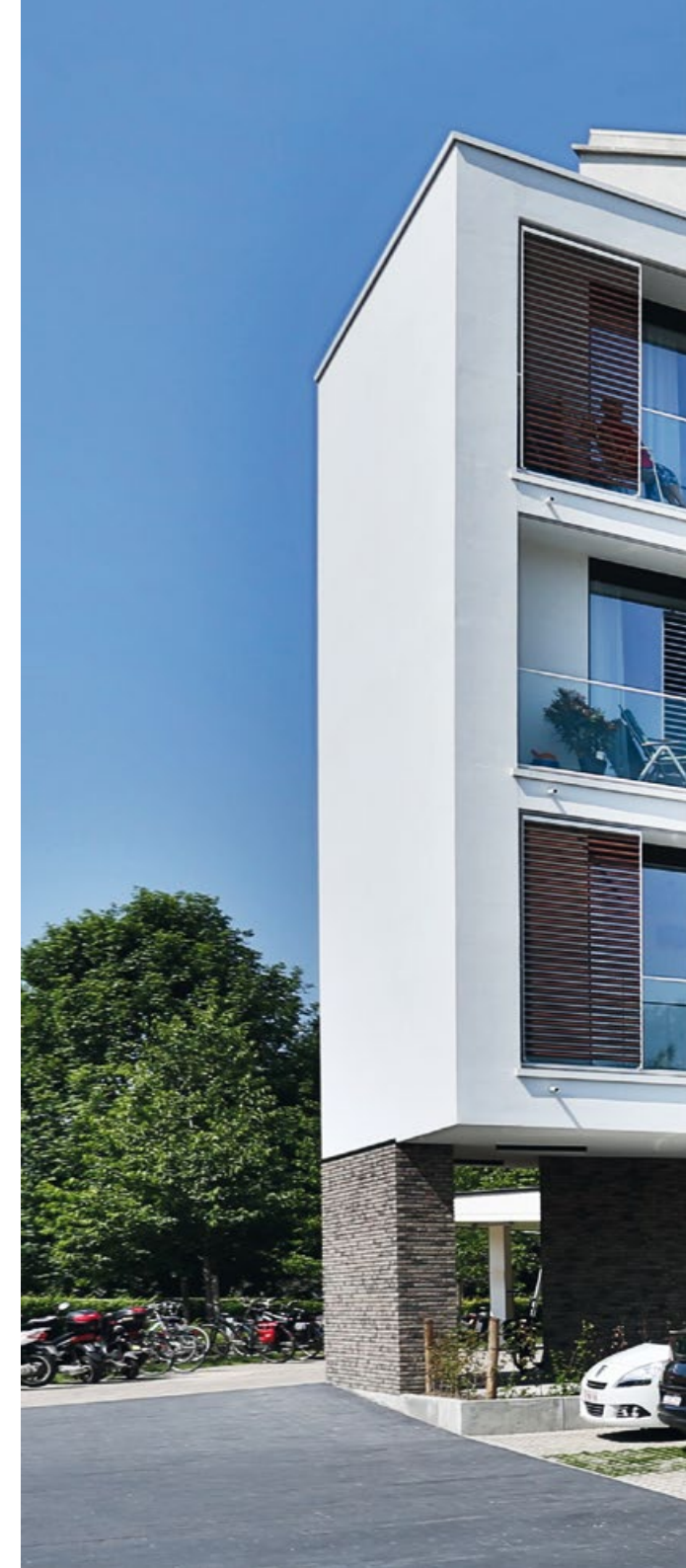
Residential care and nursing home Huize Sint-Jozef Ypres, Belgium





Residential care and nursing home Ter Durme

Lokeren, Belgium

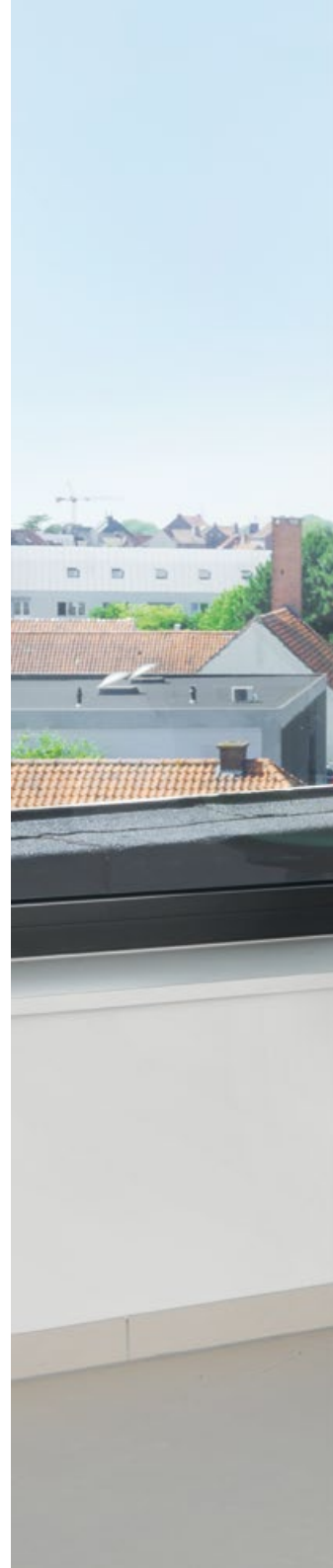




Lokeren
Hier finden Sie
die besten
Immobilien
Anbieter

P

Residential care and nursing home Ter Durme Lokeren, Belgium





Residential care and nursing home Ter Durme Lokeren, Belgium





Charité – Berlin University of Medicine

Germany



Charité – Berlin University of Medicine Germany



All photos photography by Anke Müllerlein



Charité – Berlin University of Medicine
Germany





Charité – Berlin University of Medicine Germany







© Willemien Groeb, Rotterdamse Kerk, Eddy Vanoppen

Public Centre for Social Welfare Genk

Belgium



Public Centre for Social Welfare Genk Belgium





General Hospital Groeninge

Kortrijk, Belgium





General Hospital Groeninge

Kortrijk, Belgium





General Hospital Groeninge
Kortrijk, Belgium





General Hospital Groeninge Kortrijk, Belgium





Residential care and nursing home Sint-Elisabeth

Ostend, Belgium





Residential care and nursing home Sint-Elisabeth Ostend, Belgium

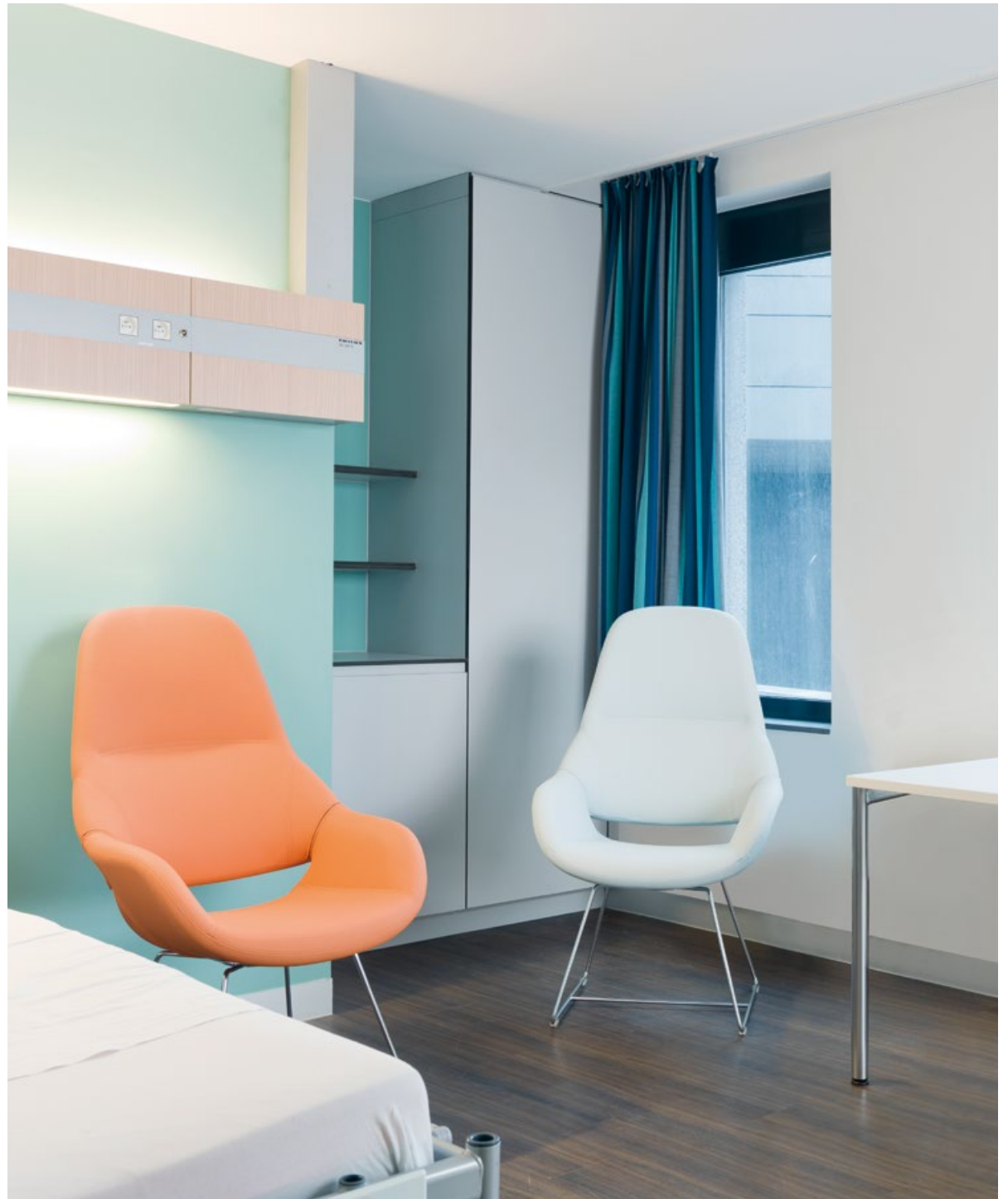




General Hospital Damiaan

Ostend, Belgium





General Hospital Damiaan Ostend, Belgium





Residential care and nursing home Rustenhove

Ledegem, Belgium





Residential care and nursing home Rustenhove

Ledegem, Belgium





Martini Hospital

Groningen, Netherlands





Martini Hospital Groningen, Netherlands





Residential care and nursing home De Vlinder

Harelbeke, Belgium



Residential care and nursing home De Vlinder

Harelbeke, Belgium





Residential care and nursing home De Vlinder

Harelbeke, Belgium





Clinic for Psycho- somatic Medicine and Psychotherapy

Westerstede, Germany





Clinic for Psychosomatic Medicine and Psychotherapy Westerstede, Germany

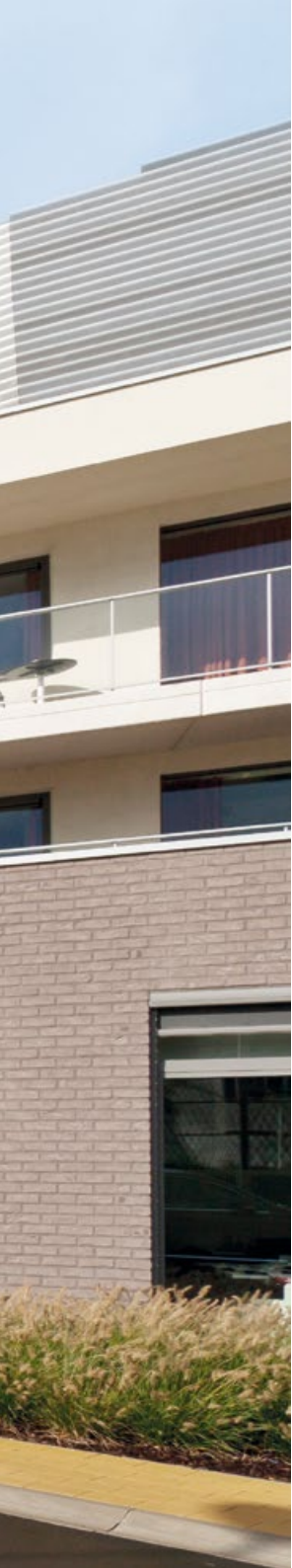




Residential care and nursing home De Ril

Middelkerke, Belgium





Residential care and nursing home De Ril

Middelkerke, Belgium







Residential care and nursing home Oase, Campus Aarschot

Belgium



© Vulpia



Residential care and nursing home Oase, Campus Aarschot Belgium





Agaplesion Diaconical Hospital Hamburg

Germany





Agaplesion Diaconical Hospital Hamburg Germany





Residential care and nursing home De Gerda

Sint-Niklaas, Belgium



Residential care and nursing home De Gerda Sint-Niklaas, Belgium





Residential care and nursing home De Gerda Sint-Niklaas, Belgium





Residential care and nursing home Paradijs

Lier, Belgium





Residential care and nursing home Paradijs

Lier, Belgium





Residential care and nursing home Paradijs Lier, Belgium





Residential care and nursing home Paradijs Lier, Belgium





Residential care and nursing home Oase, Campus Tienen

Belgium





Residential care and nursing home Oase, Campus Tienen Belgium





Institute of Public Health at Maria Hospital

Wesel, Germany





Residential care and nursing home De Waterdam

Roeselare, Belgium





Residential care and nursing home De Zathe

Nieuwpoort, Belgium



Residential care and nursing home De Zathe Nieuwpoort, Belgium





Federal Research and Clinical Center of Pediatric Hematology, Oncology and Immunology

Moscow, Russia



Federal Research and Clinical Center of Pediatric Hematology,
Oncology and Immunology
Moscow, Russia





Residential care and nursing home Huize Vincent

Temse-Tielrode, Belgium





Residential care and nursing home Huize Vincent Temse-Tielrode, Belgium





Berufsgenossen- schaftliches Universitäts- klinikum Bergmannsheil

Bochum, Germany





Berufsgenossenschaftliches Universitätsklinikum Bergmannsheil Bochum, Germany





Public Centre for Social Welfare Arendonk

Belgium





Public Centre for Social Welfare Arendonk Belgium





Public Centre for Social Welfare Arendonk Belgium





dilhome

Dilbeek, Belgium





dilhome

Dilbeek, Belgium





dilhome

Dilbeek, Belgium





dilhome

Dilbeek, Belgium





Rheumazentrum Mittelhessen

Bad Endbach, Germany





 **RHEUMAZENTRUM
MITTELHESSEN**



RHEUMATOLOGISCHE AMBULANZPRAXEN
STATIONÄRE PATIENTENAUFNAHME
THERAPIEPLANUNG
PSYCHOLOGIE
SPEISESAAL/CAFETERIA
REHABILITATIONS- UND ANSCHLUSSHEILBEHANDLUN

Rheumazentrum Mittelhessen

Bad Endbach, Germany





Rheumazentrum Mittelhessen

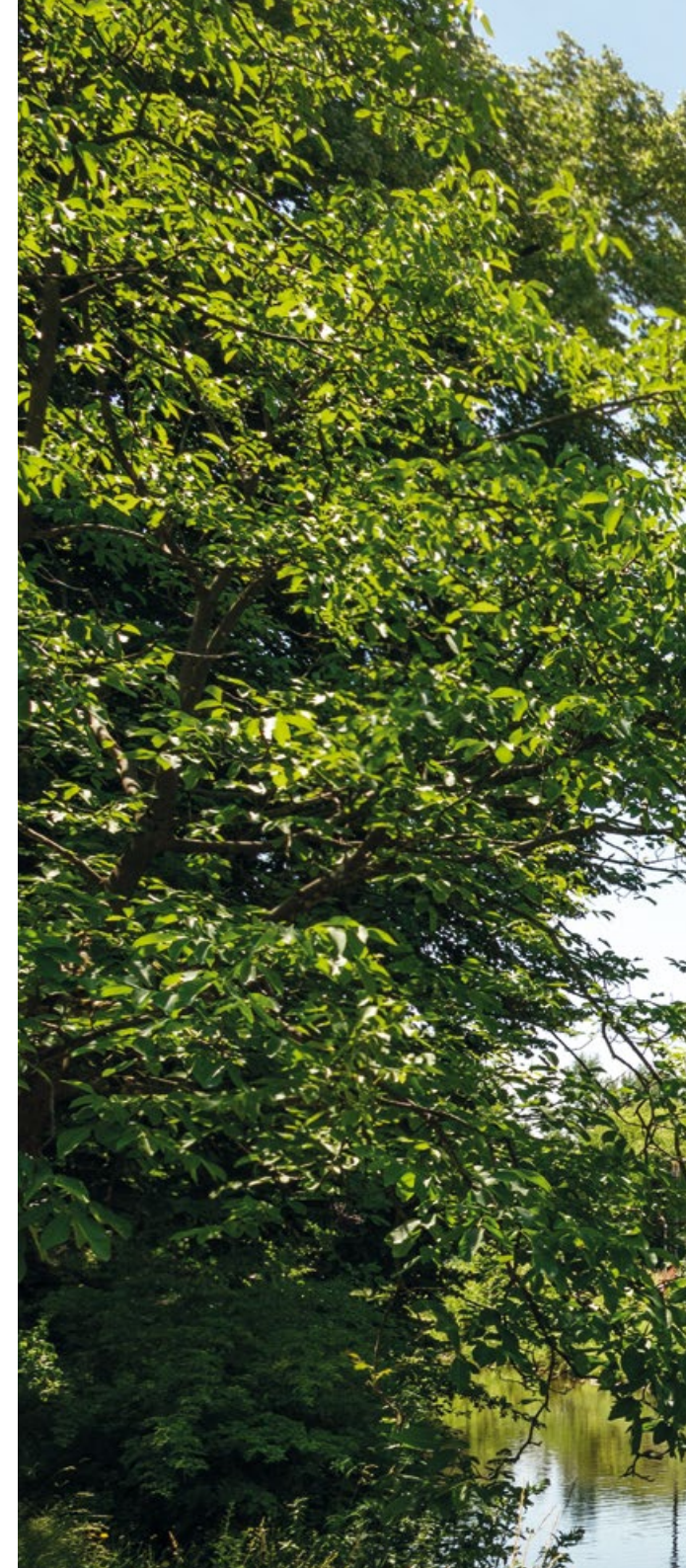
Bad Endbach, Germany





St. Antonius- Hospital Gronau

Germany





St. Antonius-Hospital Gronau Germany





St. Antonius-Hospital Gronau Germany





Robert Bosch Hospital

Stuttgart, Germany





KARMIN

Hospital architecture, microbiom and infection in hospitals

Krankenhaus-Architektur, Mikrobiom und Infektion im Krankenhaus

We are involved in scientific projects and studies, such as this demonstrator of an infection-preventive patient room. Our series 3600 Arn is part of it as a master product.

Wir engagieren uns bei wissenschaftlichen Projekten und Studien, wie bei diesem Demonstrator eines infektionspräventiven Patientenzimmers. Mit dabei unser Programm 3600 Arn als Masterprodukt.





KARMIN





kusch.com

